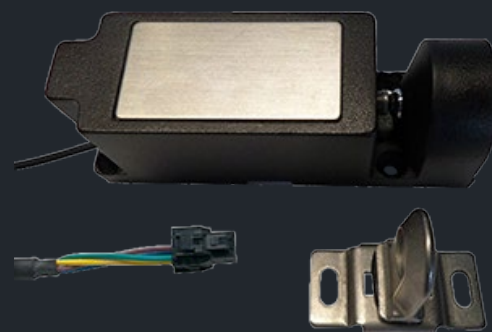


ELECTRIC FURNITURE LOCK AIR2ONE CONNECTOR – DOOR SENSOR

Solid furniture lock with metal housing. Built-In mechanical door sensor.
Flexible mounting options, features push-to-open capability.



Article number:
MI-MMV1-1051-AIR

Technical Data

Compressive Tensile Strength	200 Kg *
Cable Length	3 m
Connector	6 pin Molex Nano-fit Socket
Bolt	Steel Bolt 4,5 mm
Operating Voltage	12 V DC
Locking Cycles	500 000
Current Consumption	200 mA
Power Supply requirement for 8 locks	25 W
Temperature Range	-10 °C to +40 °C
Dimensions (LxWxH)	94 x 32 x 30.1 (mm)
Door Latch Dimensions (LxWxH)	40 x 31 x 21 (mm)

Functions

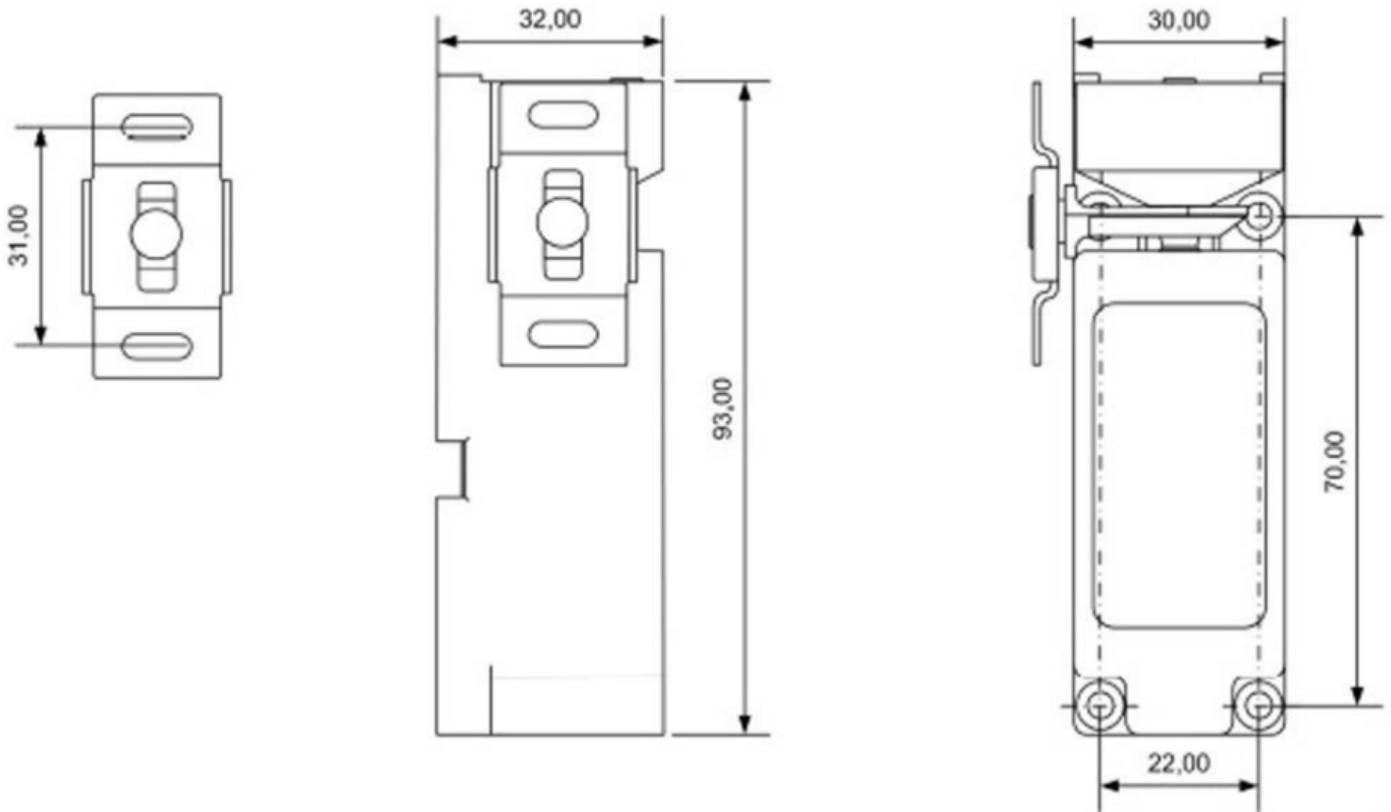
Door Open Sensor	YES
Push-to-Open Capability	YES *
Auto-Eject	NO
Mechanical Emergency Opening	NO
Permanent ON Capability	YES

* Perfect mounting situation on high performance steel frames, mounting with steel bolts. For best security keep door gaps as small as possible, max. 3 mm recommended! Applicable on wooden furniture - strength of lock will be higher than that of the wood.

Locking function MUST be tested in a sample furniture before final production regarding manipulation security and tolerance for misalignment - to ensure safe and secure locking!

Lock Installation MUST be tested while assembly before the door/drawer is closed the first time - to avoid blocking access into a cabinet!

Dimensions



ATTENTION!

FOLLOW THE INSTALLATION RECOMMENDATIONS CAREFULLY!

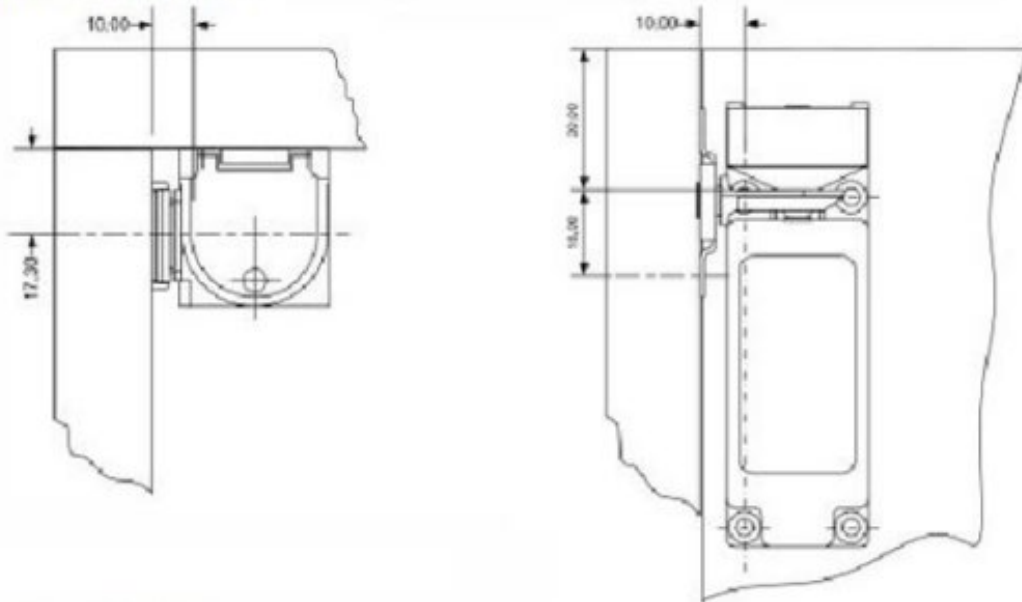
LOCK SHOULD BE INSTALLED IN SUCH A WAY THAT IT CAN BE DISMANTLED FROM THE OUTSIDE IN CASE OF DEFECT WHILE THE DOOR IS LOCKED. SO THAT ACCESS TO THE CABINET CAN BE MAINTAINED AT ALL TIMES.

Self-closing hinges and holding magnets **MUST** be used - **NO** opening tension on doors and drawers!

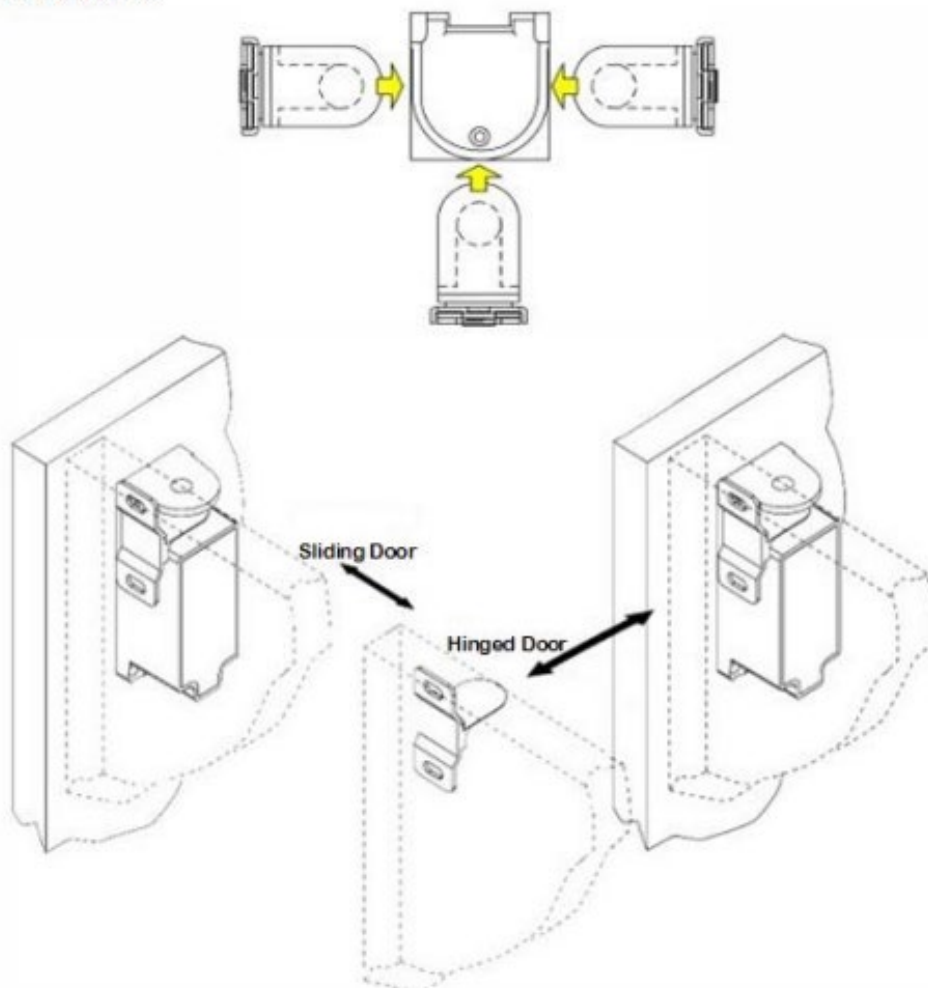
Test lock function on a prototype before going into production!

Installation

Installation Dimensions



Installation Variants



Examples and Recommendations

**Electro Lock
MMV1051**

MEMO
Contact:
service@memo.co.at
Tel.: +356 2149 2202

NO pre-load on doors –
unlocked doors must stay
closed

in combination with:
PUSH to OPEN

1 Recommendation:

Magnet holder

or

Spring hinges

2 Lock installation:

3 Installation of lock bolt:

Do NOT close door!

4 Connect lock to test unit:

5 Push button:

Check Lock activation!

6 Close door only if lock activation was OK:

Check Door Sensor!

7 Label cable according to plan:

8 Check free opening and closing:

Adjust Latch and Hinges!

Version: 1.5
Date: 12.07.2018
Author: KC